



Mountain Façade

5 3.5 2

# Cityview 364

## Ground Floor



## Floor Areas

Ground Floor Living	135m <sup>2</sup>
Upper Floor Living	164.5m <sup>2</sup>
Garage	39m <sup>2</sup>
Porch	5.5m <sup>2</sup>
Alfresco	23.9m <sup>2</sup>
<b>TOTAL (39.6sqsq)</b>	<b>367.9m<sup>2</sup></b>

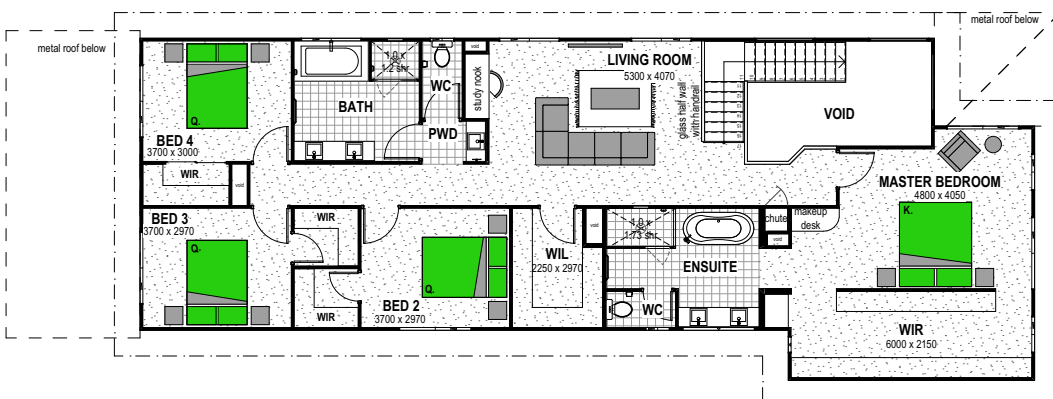
Width 8.9m  
Depth 25.8m

Floor plan and dimensions shown are for the Classic Façade.

## Features

- Media
- Study
- Butler's Pantry
- Walk-In Linen

## Upper Floor



## Facades



Scan the QR code to view all Cityview 364 facades.