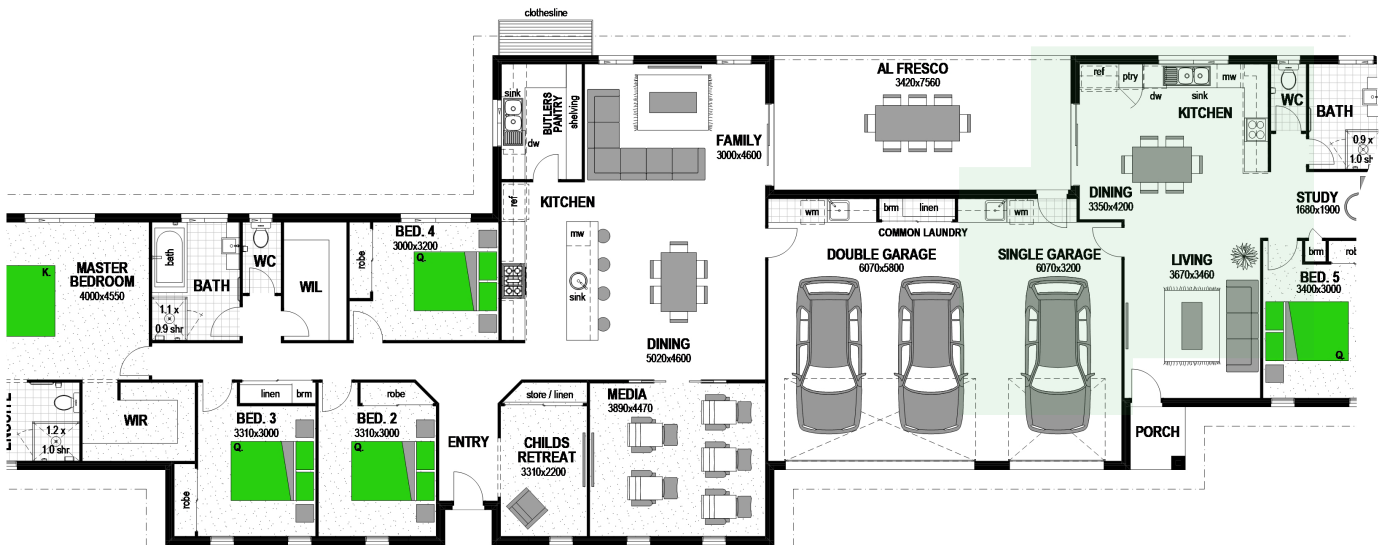




Coast Façade

Home:	4	2	2
Granny Flat:	1	1	1

# Oakleigh 355 With Granny Flat



Granny Flat

## Main Home Areas

Porch	6.1m <sup>2</sup>
Garage	39.6m <sup>2</sup>
Alfresco	25.9m <sup>2</sup>
Living	190.9m <sup>2</sup>
<b>TOTAL</b>	<b>262.5m<sup>2</sup></b>

## Granny Flat Areas

Porch	2.2m <sup>2</sup>
Garage	24.3m <sup>2</sup>
Living	65.8m <sup>2</sup>
<b>TOTAL</b>	<b>92.3m<sup>2</sup></b>

## Home Features

- Child's Retreat
- Media
- Butler's Pantry
- Walk-In Linen

## Granny Flat

- Study

## Total Dimensions

Width	36.4m
Depth	13.9m
<b>TOTAL</b>	<b>(38.2sqsq) 354.8m<sup>2</sup></b>



Floor plan and dimensions shown are for the Classic Façade.