

Award Winning Family Home

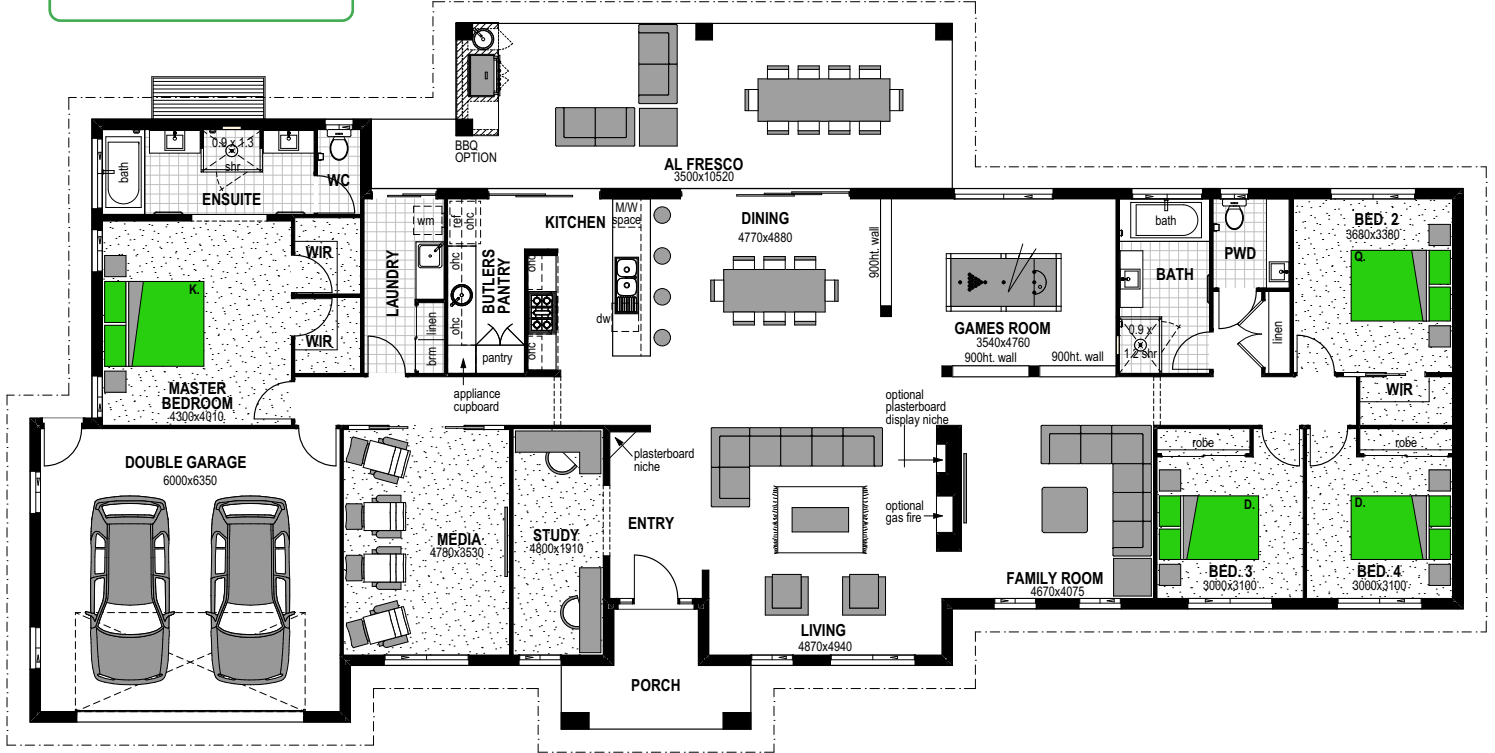


Mountain Façade

4 2 2

Kentucky 348

On display with Stroud Homes Fraser Coast



Floor Areas

Porch	7.6m ²
Alfresco	39.2m ²
Garage	41.4m ²
Living	260.2m ²
TOTAL (37.5sqs)	348.6m²
Width	30.4m
Depth	15m

Features

- Family Room
- Games Room
- Butler's Pantry
- Media
- Study

Facades

Alpine	Colonial	Hamptons	Scandi
Manuka	Mountain	Portico	

Floor plan and dimensions shown are for the Classic Façade.

Scan the QR code to view all Kentucky 348 facades.