

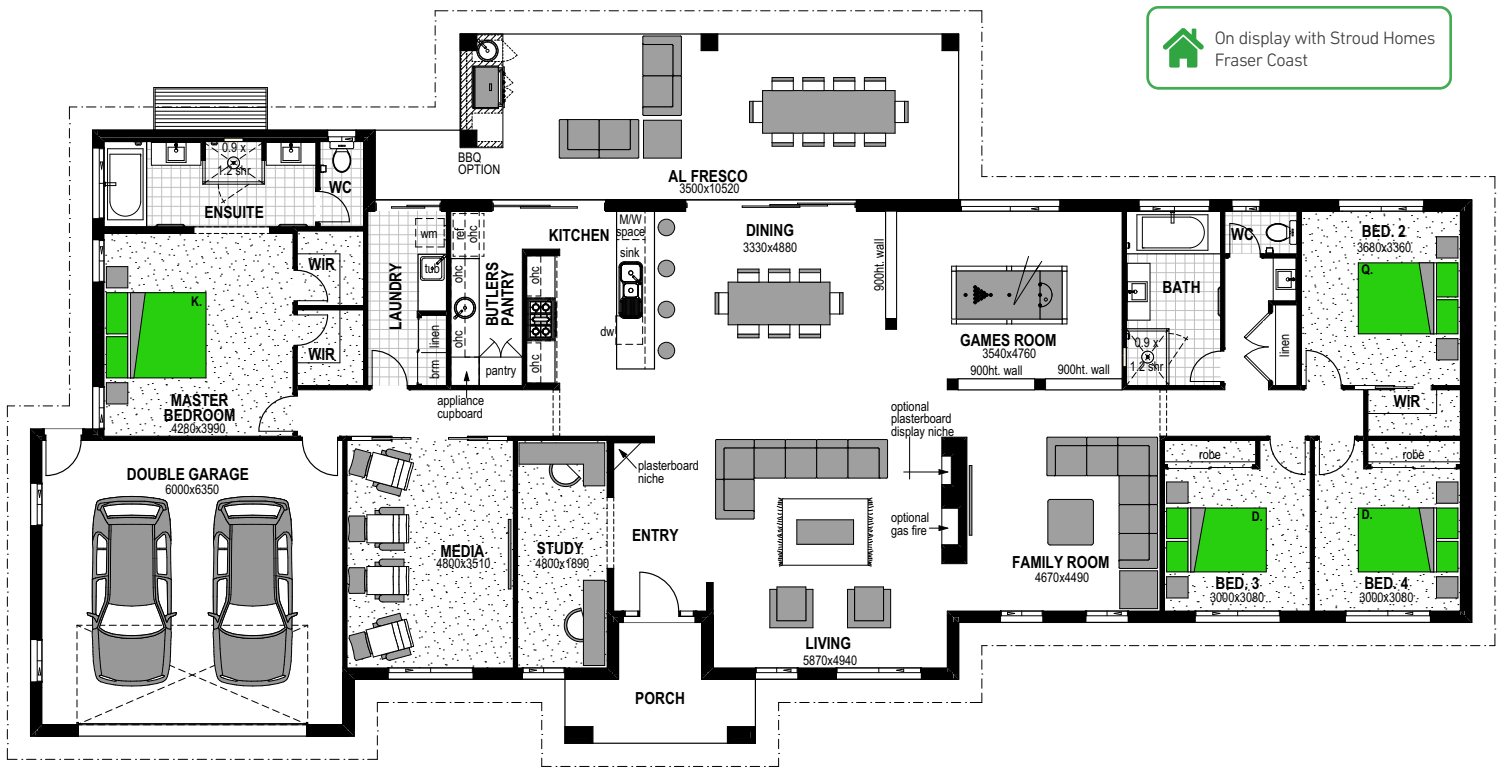


Mountain Façade

4 2 2

Kentucky 348

On display with Stroud Homes Fraser Coast



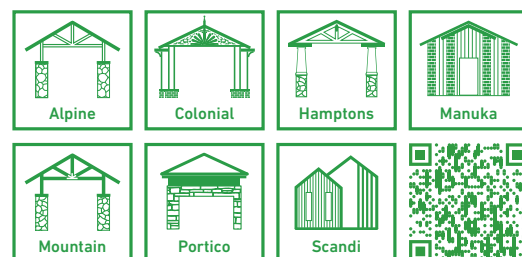
Floor Areas

Living	261.6m ²
Garage	41.7m ²
Alfresco	39.5m ²
Porch	7.5m ²
TOTAL (37.7sqs)	350.2m²
Width	30.4m
Depth	15m

Features

- Butler's Pantry
- Media
- Study
- Games Room
- Family Room

Facades



Floor plan and dimensions shown are for the Classic Façade.

Scan the QR code to view all Kentucky 348 facades.