

Award Winning Family Home

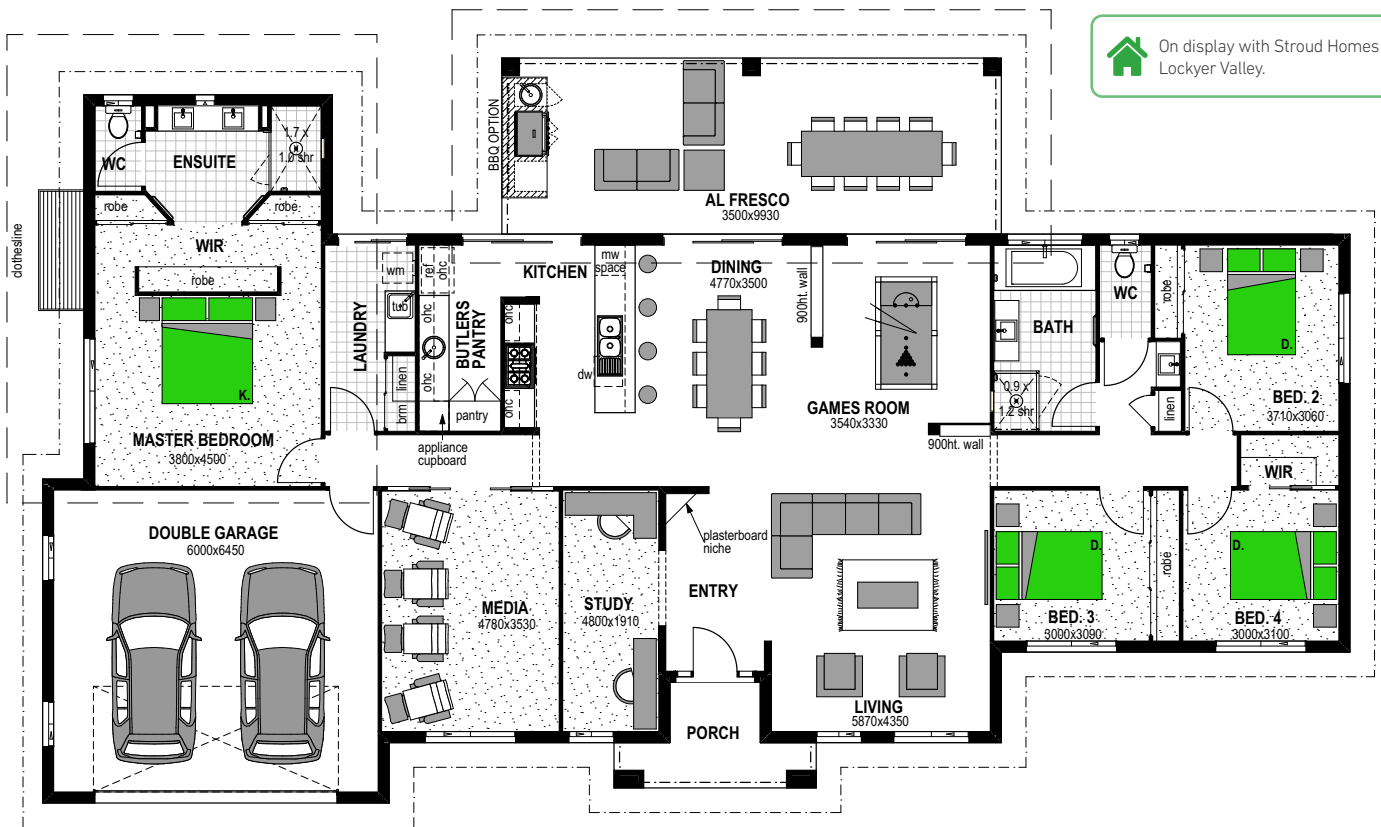


Manuka Façade



Kentucky 304

On display with Stroud Homes Lockyer Valley.



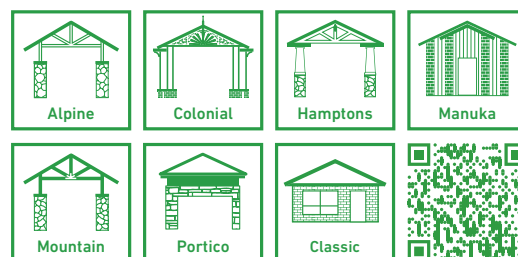
Floor Areas

Porch	5.8m ²
Alfresco	34.8m ²
Garage	41.9m ²
Living	224.2m ²
TOTAL (33sqs)	306.7m²
Width	26m
Depth	14.8m

Features

- Butler's Pantry
- Media
- Study
- Games Room

Facades



Floor plan and dimensions shown are for the Classic Façade.

Scan the QR code to view all Kentucky 304 facades.