

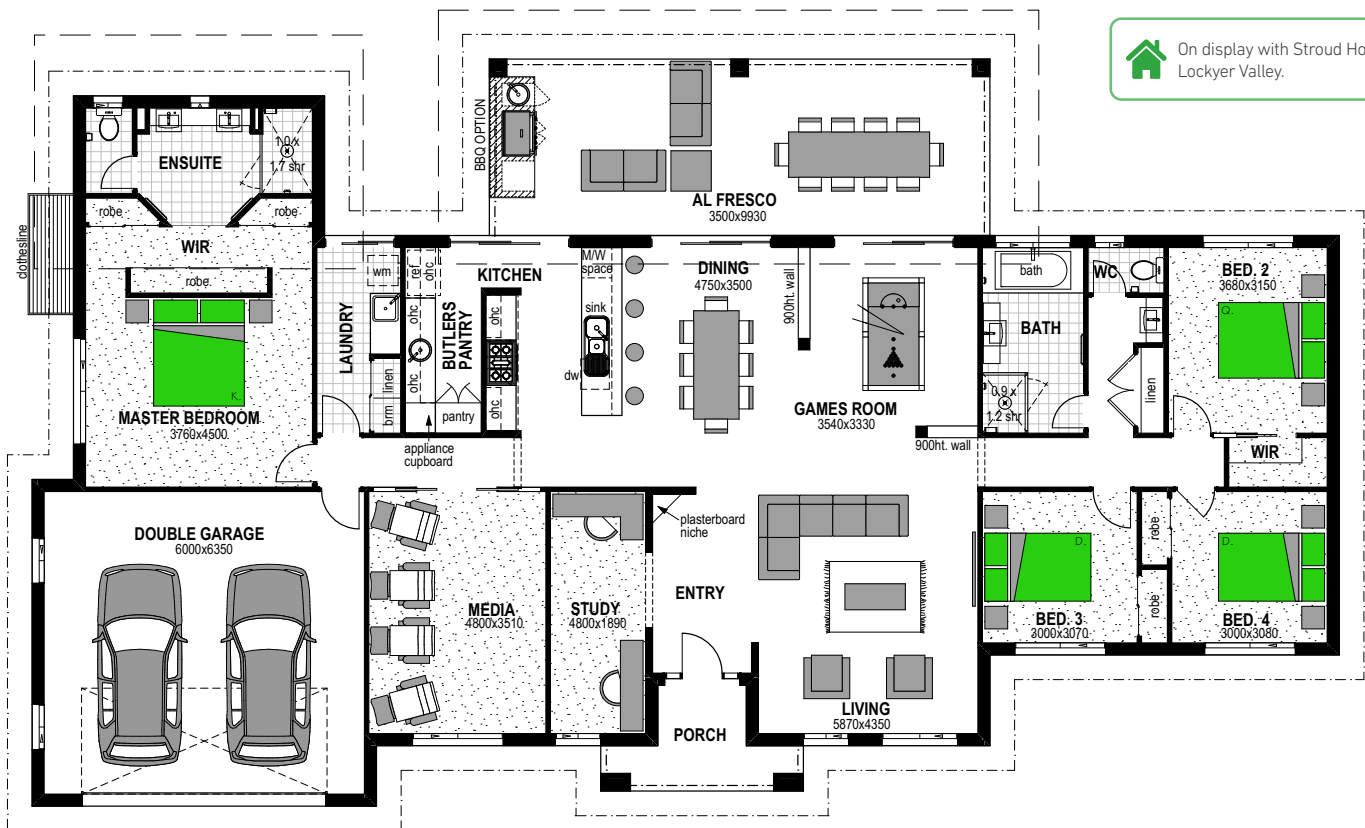


Manuka Façade

4 2 2

Kentucky 304

On display with Stroud Homes Lockyer Valley.



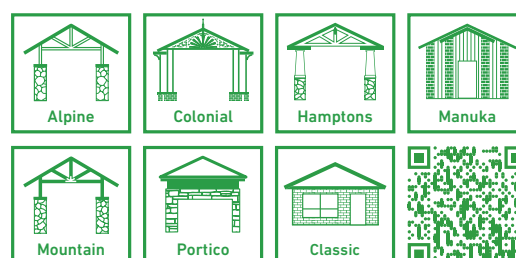
Floor Areas

Porch	5.8m ²
Alfresco	34.8m ²
Garage	41.6m ²
Living	223.8m ²
TOTAL (32.9sqs)	305.9m²
Width	25.9m
Depth	14.8m

Features

- Butler's Pantry
- Media
- Study
- Games Room

Facades



Scan the QR code to view all Kentucky 304 facades.

Floor plan and dimensions shown are for the Classic Façade.