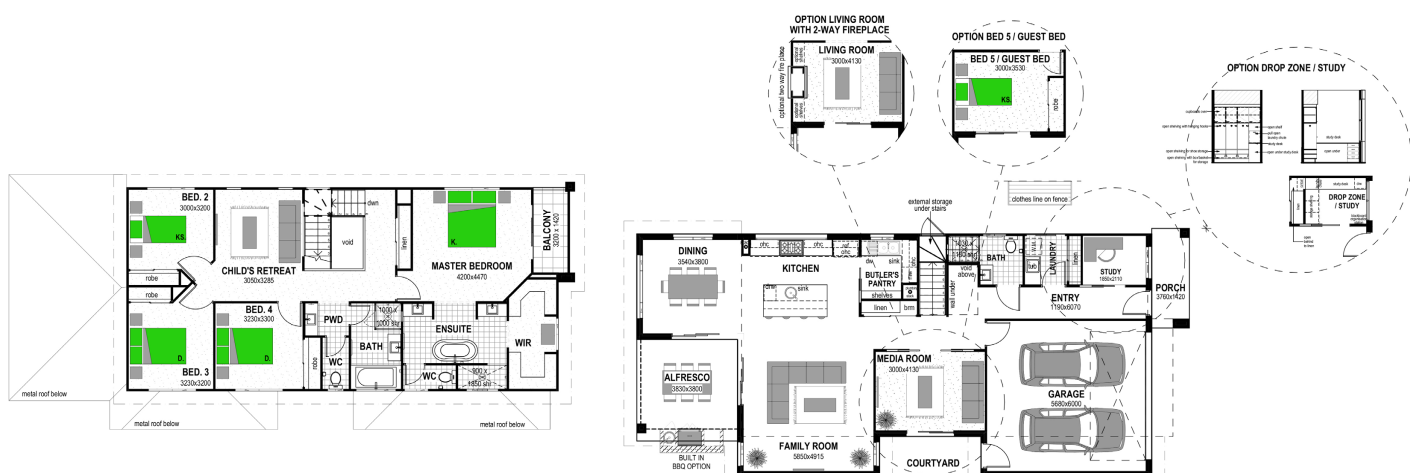




# Asher 290

Urban Façade



## Floor Areas

Ground Floor Living	114.8m <sup>2</sup>
Upper Floor Living	121.3m <sup>2</sup>
Alfresco	14.6m <sup>2</sup>
Porch	5.3m <sup>2</sup>
Balcony	4.2m <sup>2</sup>
Garage	36.2m <sup>2</sup>
<b>TOTAL</b>	<b>(32.1sqs) 296.4m<sup>2</sup></b>
Width	9.3m
Depth	20.8m

Floor plan and dimensions shown are for the Classic Façade.

## Features

- Study
- Media
- Butler's Pantry
- Child's Retreat

