

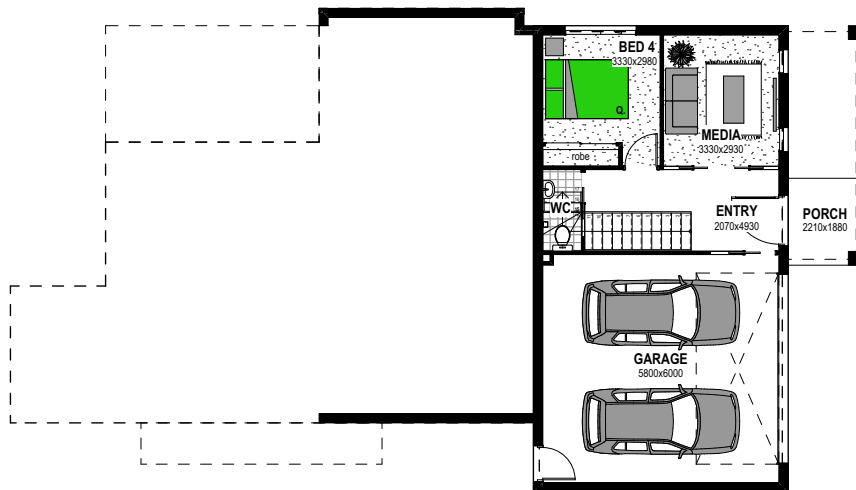


Coast Façade

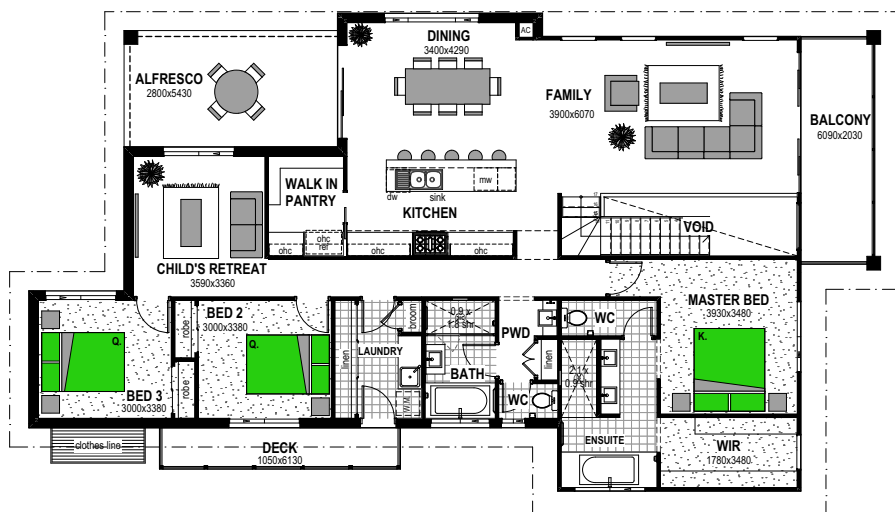
4 2.5 2

Seaview 287 - Sloped Block

Ground Floor



Upper Floor



Floor Areas

Ground Floor Living	37.7m ²
Upper Floor Living	177.4m ²
Alfresco	16m ²
Porch	4.3m ²
Balcony	12.4m ²
Garage	39.1m ²
TOTAL (30.9sqs)	286.9m²

Width	12.2m
Depth	21.7m

Floor plan and dimensions shown are for the Classic Façade.

Features

- Walk-In Pantry
- Media
- Child's Retreat

Facades



Scan the QR code to view all Seaview 287 facades.