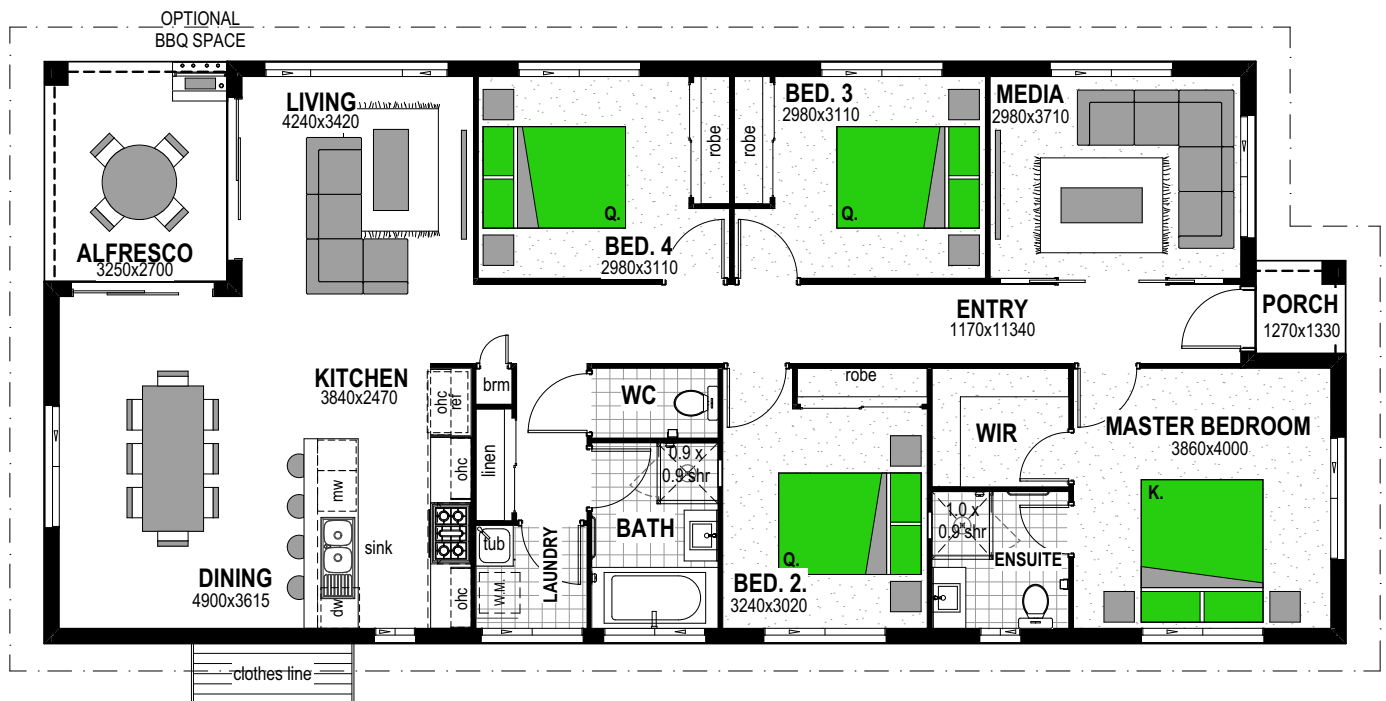




Manuka Façade

4 2

Hillcrest 158



Floor Areas

Porch	1.7m ²
Alfresco	8.8m ²
Living	148.2m ²
TOTAL (17sqs)	158.7m²
Width	8.5m
Depth	19.3m

Features

Media

Facades



Floor plan and dimensions shown are for the Classic Façade.

Scan the QR code to view all Hillcrest 158 facades.