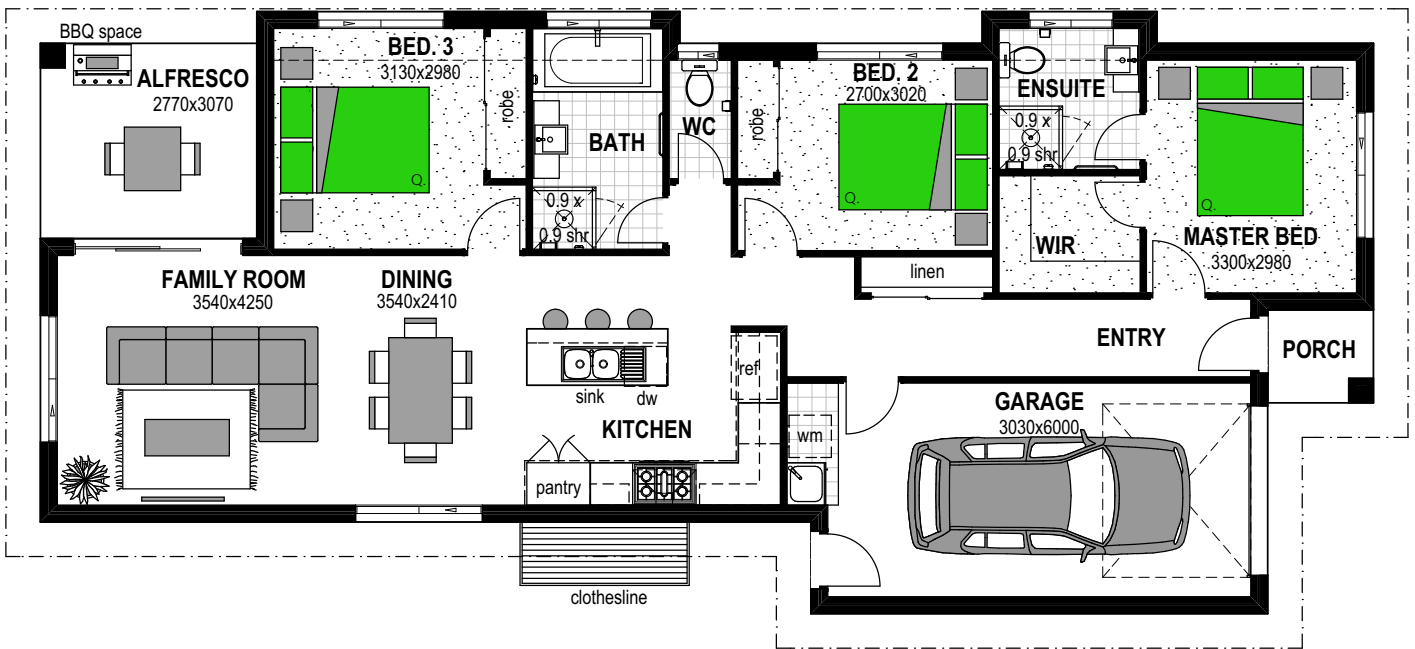




Keys 137

Mountain Façade

3 2 1

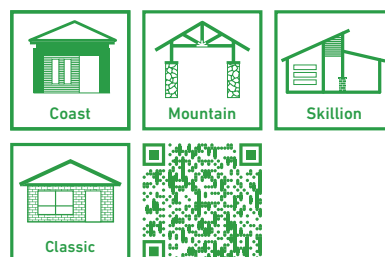


Floor Areas

Porch	2m ²
Alfresco	8.5m ²
Garage	21.9m ²
Living	105.8m ²
TOTAL (14.9sqs)	138.2m²
Width	8.5m
Depth	18.9m

Floor plan and dimensions shown are for the Classic Façade.

Facades



Scan the QR code to view all Keys 137 facades.