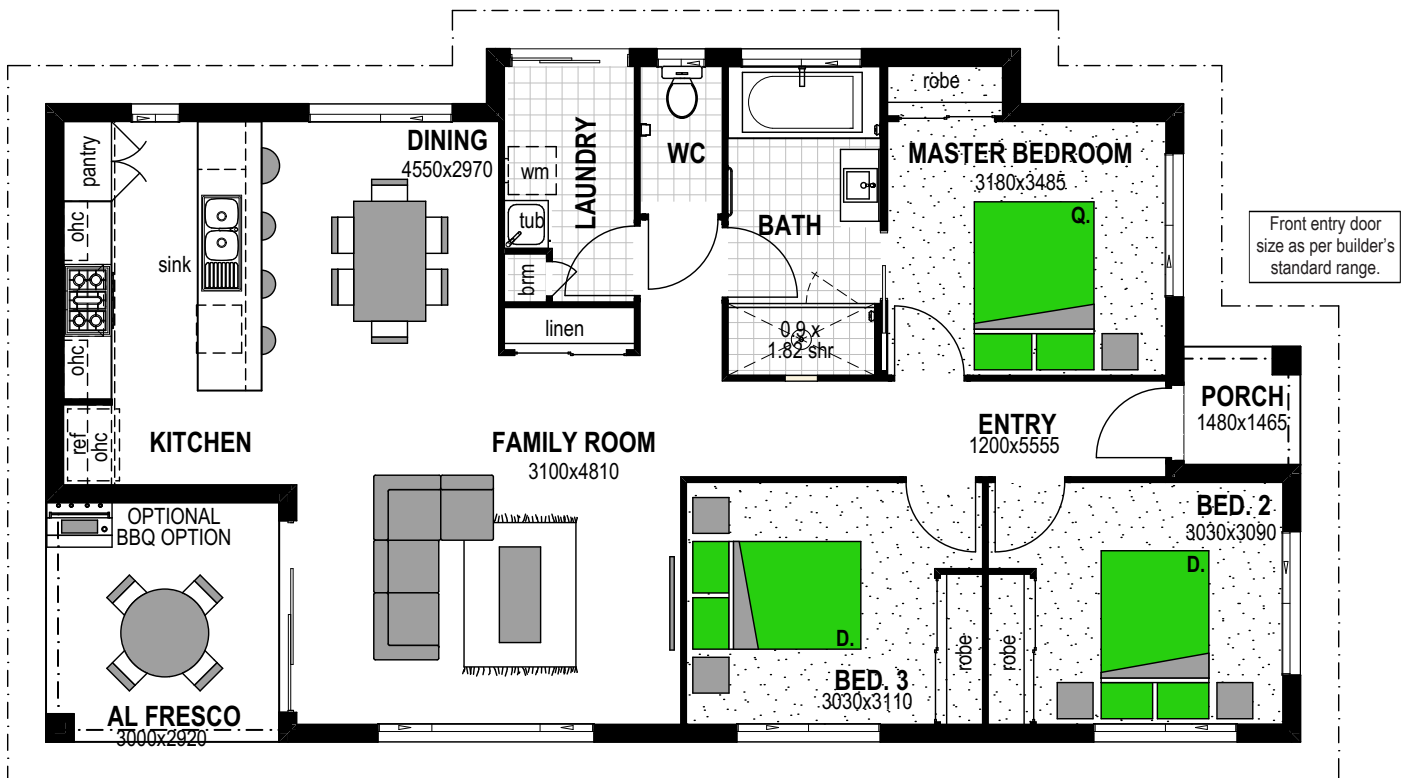




Mountain Façade

3 1

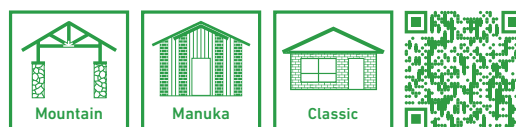
# Hillcrest 120



## Floor Areas

|                        |                           |
|------------------------|---------------------------|
| Porch                  | 1.8m <sup>2</sup>         |
| Alfresco               | 8.8m <sup>2</sup>         |
| Living                 | 110m <sup>2</sup>         |
| <b>TOTAL (12.92sq)</b> | <b>120.6m<sup>2</sup></b> |
| Width                  | 8.5m                      |
| Depth                  | 15.6m                     |

## Facades



Scan the QR code to view all Hillcrest 120 facades.

Floor plan and dimensions shown are for the Classic Façade.