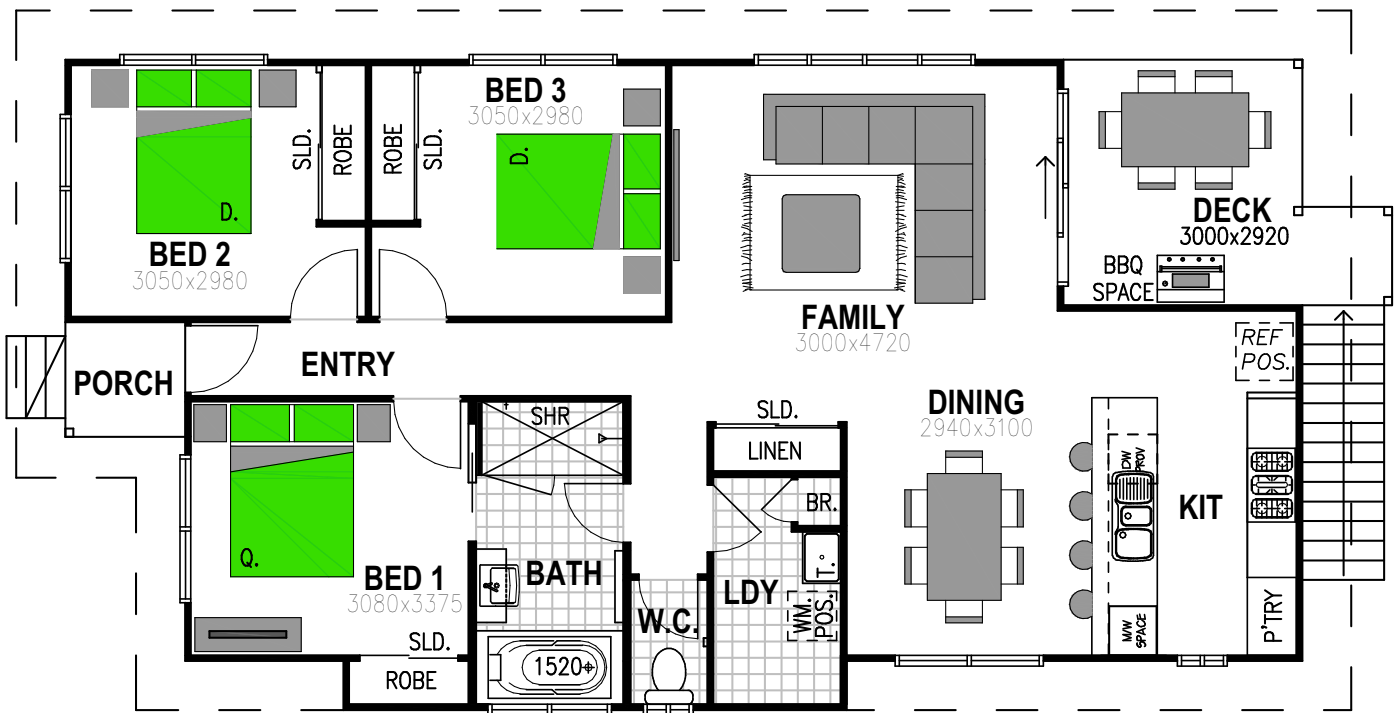




Coast Façade

3 1

# Hillcrest 110



## Floor Areas

Porch	2.1m <sup>2</sup>
Alfresco	8.8m <sup>2</sup>
Living	100m <sup>2</sup>
<b>TOTAL (11.9sqs)</b>	<b>110.8m<sup>2</sup></b>
Width	8m
Depth	16.3m

## Facades



Scan the QR code to view all Hillcrest 110 facades.

Floor plan and dimensions shown are for the Classic Façade.